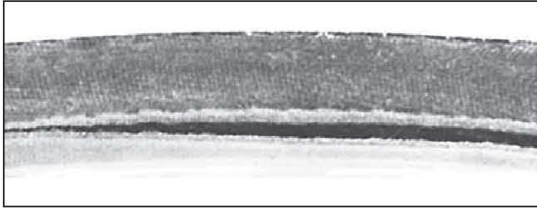


TROUBLE SHOOTING GUIDE: V-BELT FAILURE



888-291-5450 | salesteam@VBeltSupply.com



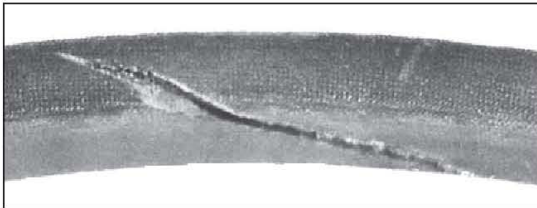
Cause of Failure — Excessive exposure to oil or grease has caused the belt to swell, become soft and the bottom envelope seam to "open up".

Correction — Provide splash guards, do not over lubricate, clean belts and sheaves with gasoline.



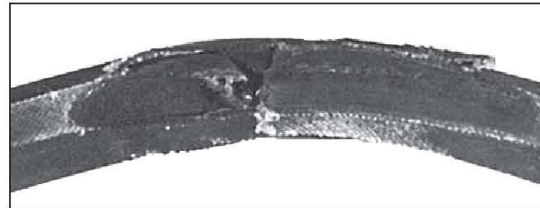
Cause of Failure — Weathering or "crazing" caused by the elements and aggravated by small sheaves.

Correction — Provide protection for the drive and replace belt or belts.



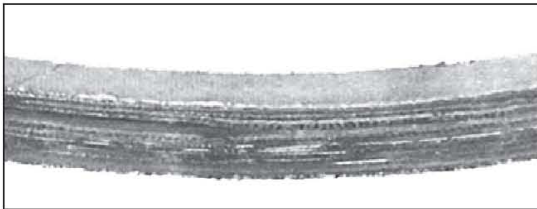
Cause of Failure — Cut bottom and sidewall indicate belt was pried over sheave and damaged during installation.

Correction — Be sure to use proper length belt and move tensioning all the way "in" when installing belt.



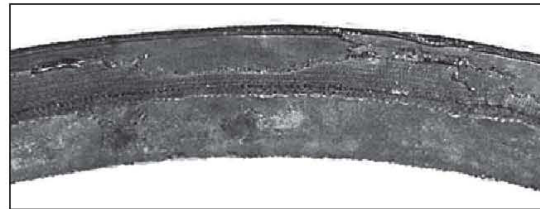
Cause of Failure — Severe localized wear caused by a frozen or locked driven sheave.

Correction — Determine that the drive components turn freely and tighten belt, if necessary.



Cause of Failure — Constant slippage caused by insufficient tension in belt.

Correction — Tension drive in accordance with the recommendations of the equipment manufacturer and this manual.



Cause of Failure — Rough sheave sidewalls cause the cover to wear off in an uneven pattern.

Correction — File or machine out the rough spot on the sheave groove. If beyond repair, replace the sheave.



Cause of Failure — Belt has evenly spaced deep bottom cracks from use of a substandard backside idler.

Correction — Replace backside idler with the minimum size recommendation.



Cause of Failure — Ply separation caused by substandard sheave diameter.

Correction — Redesign drive to use proper size sheaves.



Cause of Failure — Split on side at the belt pitch line indicates use of a sheave with a substandard diameter.

Correction — Redesign drive to utilize proper size sheaves.

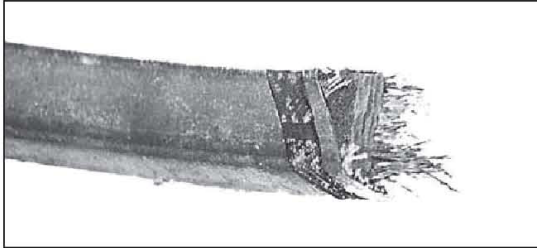


Cause of Failure — The load carrying member has been broken by a shock load or damage during installation.

Correction — Maintain proper tensioning and observe proper installation procedures.

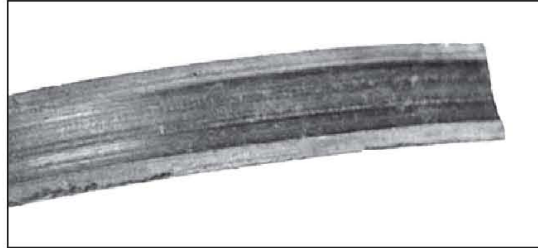
TROUBLE SHOOTING GUIDE: V-BELT FAILURE

888-291-5450 | salesteam@VBeltSupply.com



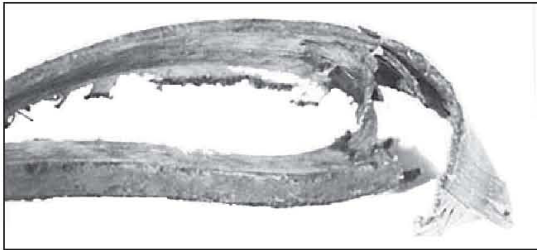
Cause of Failure — Tensile breaks can be caused by high shock loads, foreign object between the bottom of the sheave and the bottom of the belt or damage during installation.

Correction — Maintain proper drive tension and installation procedures. Provide guard to keep foreign material from coming in contact with the drive.



Cause of Failure — Back of the belt has been rubbing on a belt guard or other appurtenance.

Correction — Provide adequate clearance between belt and guard or any appurtenances.



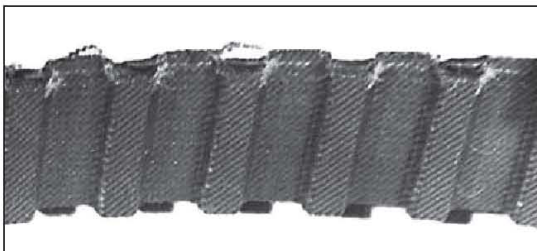
Cause of Failure — Excessive dust and rough sheaves combine to cause severe envelope wear and early belt failure.

Correction — Maintain sheave condition, alignment and attempt to protect drive from excessive dust exposure.



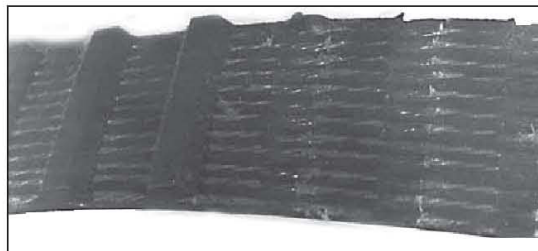
Cause of Failure — Worn sheave grooves allow the joined belt to ride too low cutting through to the top band.

Correction — Replace sheaves and maintain proper belt tension and sheave alignment.



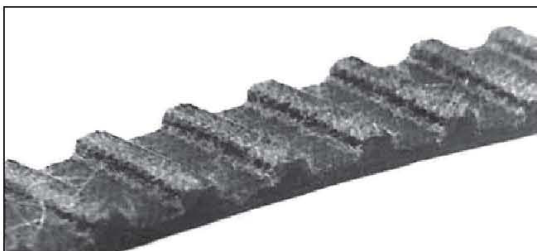
Cause of Failure — Flange wear on PD synchronous belt.

Correction — Adjust and maintain proper pulley alignment.



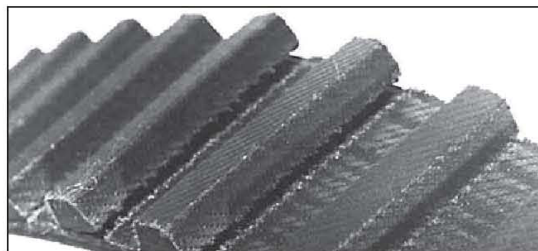
Cause of Failure — Web fabric wear caused by improper belt and pulley fit.

Correction — Check belt/pulley fit and replace worn or out-of-spec pulleys.



Cause of Failure — Tooth shear caused by belt overload condition from improper application or shock loads.

Correction — Consult engineering manual to proper application and maintain proper belt tension.



Cause of Failure — Fabric wear caused by insufficient belt tension or pulleys which are not to the standard PD pulley dimensions and tolerances.

Correction — Maintain proper tension and replace the out-of-spec pulleys.